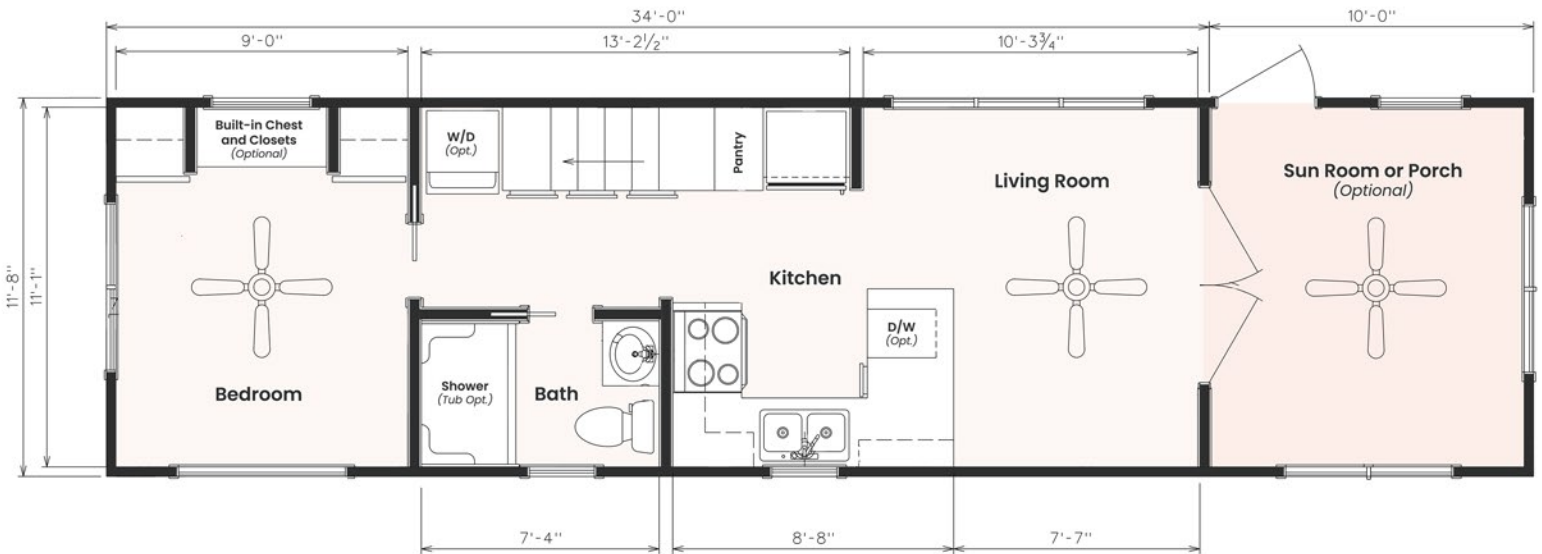


TINY LIFE HOMES



Blackberry

398 sq ft | 12' x 44'
1 BED | 1 BATH  6



BLACKBERRY

MODULAR FLOORPLAN

with choice of a wide hallway, desk and pantry, bunk beds, or stairs to an optional loft.

SHED-STYLE CEILING

lined with transom windows for abundant lighting.

OPTIONAL SUNROOM

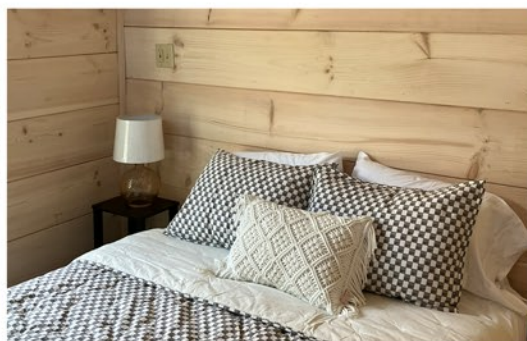
provides for an additional 3-season living area.



The Blackberry tiny home has natural wood features, making room for plenty of color choices throughout the living room, kitchen, bath, and bedroom. This is a customizable floorplan and you can easily add an optional loft and sunroom porch.



Living Tiny...made easy.



Sleeping Tiny...made even easier.

**The home series, floor plans, photos, renderings, specifications, features, materials and availability shown may vary and are subject to change without notice.*



(828) 634-0077

| www.tinylife.com

| sales@tinylife.com