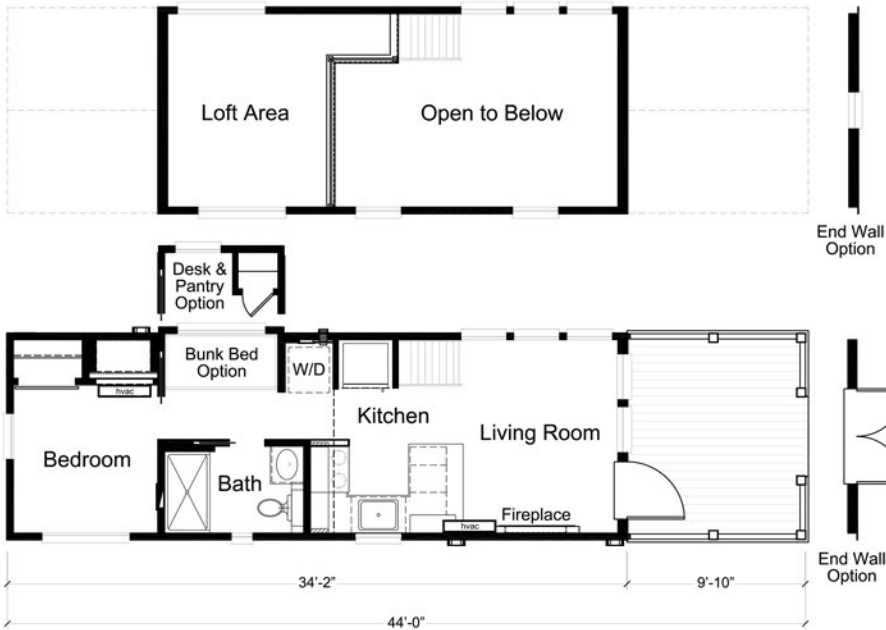


# THE SEABREEZE



394 Sq Ft | 12' x 44'  
 1 1



- 1" x 6" tongue & groove ceiling
- Solid wood cabinet doors
- 5' one-piece tub/shower combo
- Stainless steel deep kitchen sink
- Stainless steel appliances
- Washer/dryer combo unit
- 20,000 BTU mini-split A/C & heat
- On-demand tankless water heater
- 22-13-13 insulation
- 100 amp electrical service
- Galvalume® metal roof
- James Hardie Cemplank® lap siding
- Full-view door with mini-blinds
- Metal railings w/composite decking



828.634.0077  
 sales@compactcottages.net  
 www.compactcottages.net

